

MONTHLY MEMBERSHIP PROGRESS REPORT

District 9 EC

Results as of: 2/29/2024

GMT:

LOCATION IOWA

GMT CA

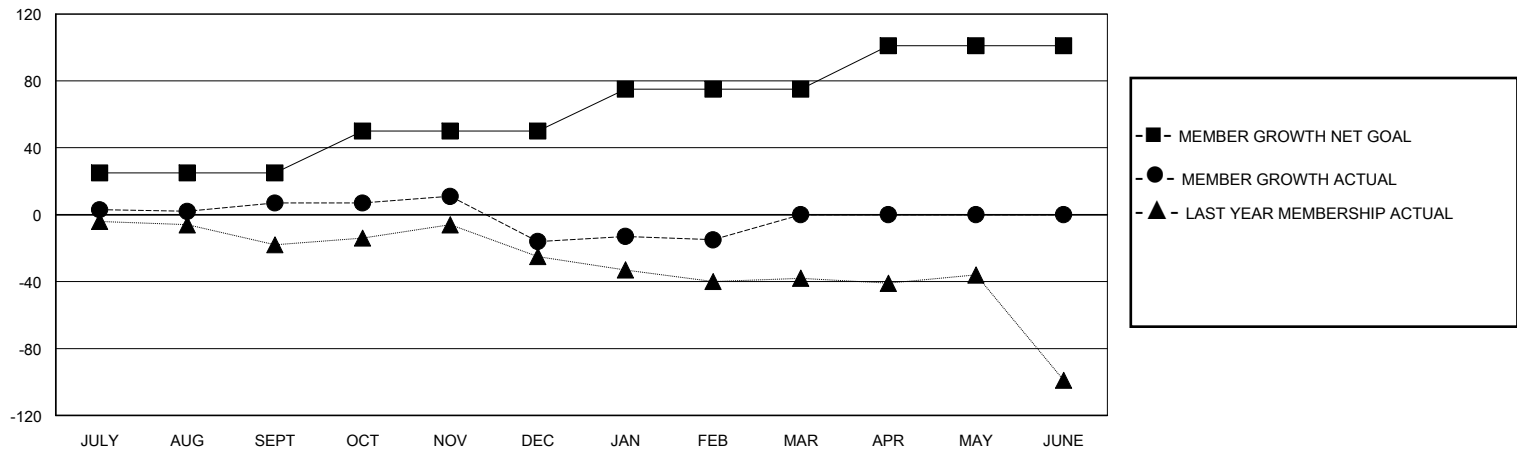
Clubs			
RESULTS FOR 2023-2024			
QUARTER	NEW CLUB GOAL	NEW CLUBS	DROPPED CLUBS
JULY/AUG/SEPT	0	0	0
OCT/NOV/DEC	0	0	0
JAN/FEB/MAR	0	0	0
APR/MAY/JUNE	1	0	0

Members			
RESULTS FOR 2023-2024			
QUARTER	MEMBER GROWTH NET GOAL	MEMBER GROWTH ACTUAL	DROPPED MEMBERS ACTUAL (including transfers)
JULY/AUG/SEPT	25	25	17
OCT/NOV/DEC	25	24	42
JAN/FEB/MAR	25	13	9
APR/MAY/JUNE	26	0	0

GOALS AND ACTUAL NEW CLUBS CUMULATIVE



GOALS AND ACTUAL MEMBERS CUMULATIVE



DROPPED CLUBS: 0	22 CLUBS OF 42 ADDED 1 OR MORE NEW MEMBERS	GENDER DISTRIBUTION MALE 755 (67.77%) FEMALE 359 (32.23%)
DROPPED MEMBERS DECEASED 14 CLUB CANCELLED 0 OTHER 54 TOTAL 68	CLICK HERE FOR CUMULATIVE MEMBERSHIP DATA	TOTAL FAMILY UNIT MEMBERS 296 FAMILY MEMBERS PAYING HALF DUES 152